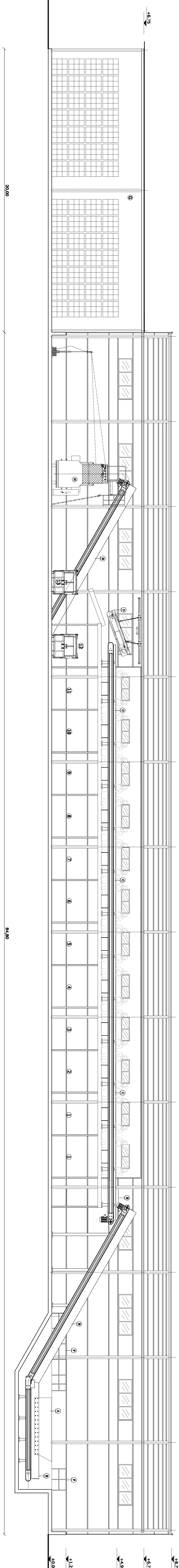


- EQUIPMENT LEGEND / LEGENDA EQUIPAMENT

- HAND - SORTING CATEGORIES LEGEND /
LEGENDA CATEGORIIL SORTATE MANUALA**

- 7 CARDBOARD / CARTON
- 8 PRINTED PAPER / WHITE TYPING
- 9 REST PAPER / WHITE RAINPA
- 10 PVC / PVC
- 11 PET / PET
- 12 HDPE / HDPE
- 13 PLASTICS / PLASTIC BAGS
- 14 NON-FIBROUS METALS / METAL WASTE
- 15 WHITE GLASS / STICLA ALBA
- 16 COLORED GLASS / STICLA COLORATA
- 17 NON-RECYCLABLES / NERECICLABILE
- 18 FIBROUS METALS / METAL PEROSE

PLAN VIEW / VEDERE PLAN

SECTION A-A / SECTION B-B

Page 1 of 2	Version	Approved Date	2024	Next Update in 180	Department
<p>2024-2025 Academic Year</p> <p>1. PURPOSE AND SCOPE This document outlines the procedures and standards for the 2024-2025 academic year, covering all aspects of the educational process, from curriculum development to student assessment.</p> <p>2. GOALS AND OBJECTIVES The primary goals of this document are to ensure consistency in teaching practices, maintain high academic standards, and provide a clear framework for all stakeholders involved in the educational process.</p> <p>3. CURRICULUM DEVELOPMENT The curriculum for the 2024-2025 academic year has been developed in accordance with the national standards and the school's mission statement. It includes a detailed breakdown of the subjects, topics, and learning objectives for each grade level.</p> <p>4. TEACHING PRACTICES The following teaching practices are recommended for all teachers: <ul style="list-style-type: none"> Use a variety of instructional strategies to engage students. Provide clear, concise instructions and feedback. Encourage student participation and collaboration. Use formative assessment to monitor student progress. </p> <p>5. STUDENT ASSESSMENT The assessment process should be designed to measure student learning and provide feedback for improvement. This includes both formative and summative assessments.</p> <p>6. PROFESSIONAL DEVELOPMENT Teachers should engage in ongoing professional development to stay current in their field. This can include attending workshops, conferences, and participating in peer observations.</p> <p>7. COMMUNICATION Effective communication is essential for the success of the educational process. Teachers should maintain regular communication with students, parents, and colleagues.</p> <p>8. MONITORING AND EVALUATION The school will monitor the implementation of this document and evaluate its effectiveness. This will be done through a combination of self-reflection, peer observation, and data analysis.</p>					